



## EzSensor<sup>Vet</sup>

*Veterinary Digital Imaging Solutions  
Intraoral CMOS Sensors*

- Superior Image Obtained With CMOS Technology
- Slim Design For Easy Positioning
- IP68 Water And Dust Protection
- Fiber Optic Cable Connector
- Ergonomic Rounded Corner Design For Comfort
- Trusted Equipment Durability



# The EzSensor Vet provides trustworthy images for accurate diagnosis and treatment planning.

## SPECIFICATIONS

		EzSensor Vet
Model Number	Unit	HDI-S
Sensor Type	-	CMOS
Scintillator	-	FOS (FOP + Csl)
Pixel Size	µm	29.6
Pixel Array	Pixels	Binning Mode:1216x878
A/D	Bits	12
Waterproof		IP68
Energy Range	KvP	55 ~ 70
Data Output (Interface)	-	Direct USB (USB 2.0)
Input Voltage	V	DC 5V, 1 AMP
Dynamic Range	dB	≥ 67
Theoretical Resolution	lp/mm	16.8
Cable Length	ft	8.6

\* Specifications subject to change without prior notice \*

## SLIM DESIGN, EASY POSITIONING

Rounded corner design with 4.8mm slim design allow maximum comfortable placement against soft tissue by reducing pressure on oral mucosa.

- The advantage of the digital sensor is to provide fast and efficient workflow.
- Direct USB connector enables fast image transfer.
- EzSensor Vet rated at IP68, the highest level of Ingress Protection (IP) : Complete protection against dust and water

EzDent Vet Acquisition Software



Assured cable durability

Direct USB provides fast image transfer and compatibility with a PC

Rounded edges provide patient comfort

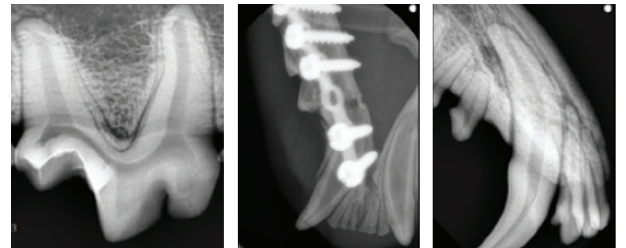
Anti-slip design

4.8mm slim sensor mount supports easy positioning

Reinforced and ultra flexible fiber optic cable enhances strain relief

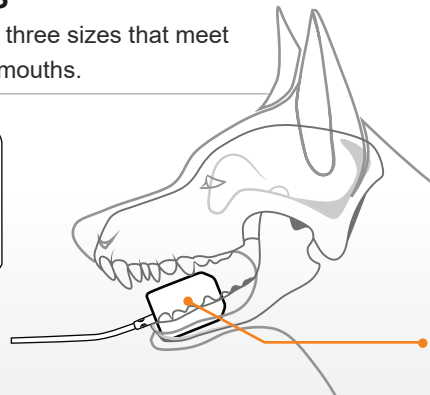
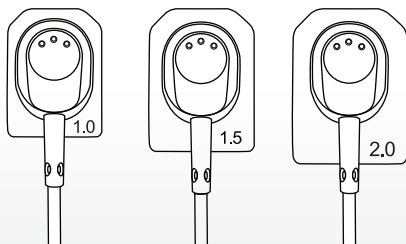
## OBTAIN HIGH QUALITY DIAGNOSTIC IMAGES

Using hybrid CMOS technology, EzSensor Vet series provide sharp, high quality images. The high-resolution technology combined with noise and artifact suppression provides clear and consistent precise diagnosis.



## DIMENSIONS and OPTIONS

Ergonomically designed sensors has three sizes that meet the needs of various sizes of animal mouths.



	Size 1.0	Size 1.5	Size 2.0
Active Area	20 x 30 mm 0.79 x 1.81 in	24 x 33 mm 0.94 x 1.30 in	26 x 36 mm 1.02 x 1.42 in
Dimension	25.4 x 36.8 mm 1 x 1.45 in	29.2 x 39.5 mm 1.14 x 1.55 in	31.3 x 42.9 mm 1.23 x 1.69 in
Thickness	4.8 mm (0.19 in)	4.8 mm (0.19 in)	4.8 mm (0.19 in)

EzSensor Vet series features multiple sizes to accommodate various mouth sizes

