

# DRAMIŃSKI *4Vet Slim*

*user friendly • versatile • modern design*

- compatible with various probes
- compatible with OPU set
- portable / stationary
- AC plug or battery powered



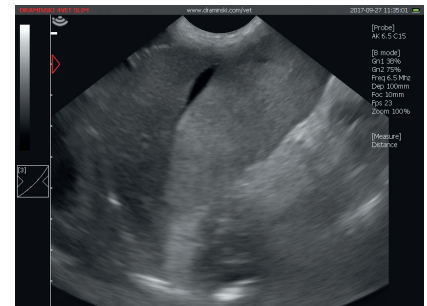
# DRAMIŃSKI *4Vet Slim*

## PORTABLE VETERINARY ULTRASOUND SCANNER WITH CHANGEABLE ELECTRONICAL PROBES

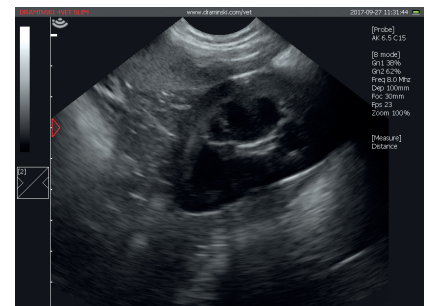


- touch screen 10,4"
- ready to work in 25 sec.
- compatible with various probes
- needle enhancement
- color Doppler
- modern design

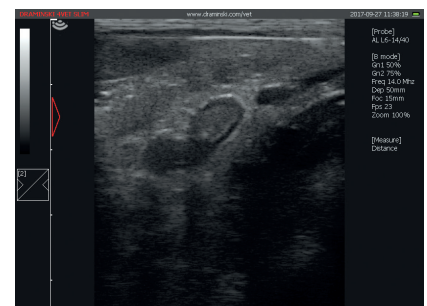
Perfect diagnosis of animals with high quality image



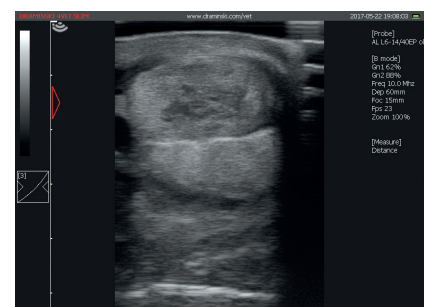
Free liquid in abdomen



Kidney of healthy dog



Adrenal gland of healthy dog



Tendons of flexor muscles of horse

Do you need anything else  
for effective work?

<b>Monitor</b>	LCD LED display, diagonal 10,4"
<b>Imaging modes</b>	B, B+B, 4B, M, B+M, Color Doppler, PDI, PWD
<b>External dimensions</b>	width 26 cm, height 25 cm, depth 5,5 cm
<b>Weight</b>	2,8 kg (without probe and battery)
<b>Image managing</b>	zoom 60-300% every 20%, Full screen, image saving, cine loop (256 frames)
<b>Presets</b>	saved, possibility of making new ones
<b>Grayscale</b>	256 shades of gray
<b>Measurements</b>	<b>basic:</b> area, distance, ellipse, grid, stenosis, volume <b>OB/GYN:</b> aging tables for different species
<b>Functions control</b>	capacitive touch screen
<b>Images and cine loops memory</b>	100 GB, images saving and cine loops
<b>Data transfer standard</b>	Dicom 3,0
<b>Probe connection</b>	one port, automatical recognition of probe
<b>External ports</b>	2 x USB 3.0, 1 x LAN, 1 x Display Port
<b>Power supply</b>	AC adapter, Li-Ion battery 14.4 V, 10Ah
<b>Continuous work on battery</b>	about 4 hours
<b>Battery charging time</b>	about 3 hrs (charger type: 3240LI)

